

# TRIFORM

## Sheet Hydroforming

**Press Model  
16-10-7BD**

### The Next Generation of Sheet Hydroforming

Our revolutionary Triform presses have been engineered using the latest technology: Modern design software, state-of-the-art hydraulics and advanced controls. The result is a sophisticated line of hydroforming presses that offer both shallow and deep draw forming capabilities for use in a wide range of industries - aerospace, lighting, automotive, medical devices and more. Triforms offer precision forming in a portable, versatile, easy-to-use design.

### Why Triform?

The Triform creators are highly experienced engineering and manufacturing professionals with decades of involvement in the aerospace and machine tool industries. Through first-hand experience and extensive research, it was found that existing hydroform presses were too expensive, too heavy, and physically impractical for many users. Additionally, quality used hydroform presses are rare and often antiquated with unreliable controls and hydraulic systems.

### How is the Triform Unique?

The use of advanced engineering allowed for the design of a unique pressure containment system that significantly reduced the press size without sacrificing integrity or durability. The 1,000 ton press requires no special flooring or ceiling height requirements which eliminates the need for expensive pits and foundations. It is highly portable and installs in one day at any facility. The Triform Sheet Hydroformer is equipped standard with CNC controls for fast job set up and tight control of the forming process.



**1,000 Ton Deep Draw  
Model 16-10-7BD**

### Hydropress Features and Benefits

- Deep Draw Hydroforming
- High pressure containment system allows for the production of complex shapes for tight tolerance parts
- Single Tool Technology
- Compact and lightweight design allows for portability and flush floor operation
- Easy setup and quick installation
- Value Engineered
- Designed for low maintenance and durability
- Precision control of the forming pressure down to 1% of full scale and .002" of punch travel
- Low tooling costs and greater flexibility with processes and part design
- High speed cycle times for product productivity
- Net shaped part capability

**View us on the web at:  
[www.triformpress.com](http://www.triformpress.com)**

## Triform 16-10-7BD Press Specifications

<b>Capabilities:</b>	<b>1,000 Ton</b>
<b>Max. Chamber Pressure</b>	<b>10,000 psi (69 MPa)</b>
<b>Forming Area</b>	<b>16" dia. (406 mm)</b>
<b>Lower Punch Force</b>	<b>380 Tons</b>
<b>Lower Punch Stroke</b>	<b>7" (178 mm)</b>
<b>Draw Depth Capacity</b>	<b>7-1/2" (191 mm)</b>
<b>Max. Punch Tool Diameter</b>	<b>12" (305 mm)</b>
<b>Daylight</b>	<b>12" (305 mm)</b>

<b>System Dimensions:</b>	
<b>Overall System Length</b>	<b>63" (160 cm)</b>
<b>Overall System Width</b>	<b>145" (368 cm)</b>
<b>Overall System Height</b>	<b>120" (305 cm)</b>
<b>Floor Space Required</b>	<b>175" x 106" (445 x 269 cm)</b>
<b>Total System Weight</b>	<b>45,000 lbs. (20,400 kg)</b>

<b>Control System:</b>	
<b>CNC/PLC</b>	<b>Allen Bradley</b>
<b>Electrical By</b>	<b>Allen Bradley</b>
<b>Touchscreen Interface</b>	<b>AB PanelView (Color)</b>
<b>Job Storage/Recall</b>	<b>500+ Job Capacity</b>

<b>Power System:</b>	
<b>Main Motor Horsepower</b>	<b>150 HP</b>
<b>Pump Manufacturer</b>	<b>Oil Gear</b>
<b>Working Fluid</b>	<b>ISO 46 W</b>
<b>Heat Exchanger</b>	<b>Included</b>
<b>Temp/Level Sight Gauge</b>	<b>Included</b>
<b>Main Power</b>	<b>480V</b>
<b>Phase</b>	<b>3 Phase</b>
<b>Hz</b>	<b>60 Hz</b>
<b>Control System Voltage</b>	<b>110V</b>
<b>FLA Draw</b>	<b>185 Amps</b>
<b>Alternative Power Configurations Available</b>	

<b>Performance:</b>	
<b>Forming Pressure Control</b>	<b>(+/-) 1%</b>
<b>Forming Position Control</b>	<b>(+/-) .002" (0.05mm)</b>

## CNC Control

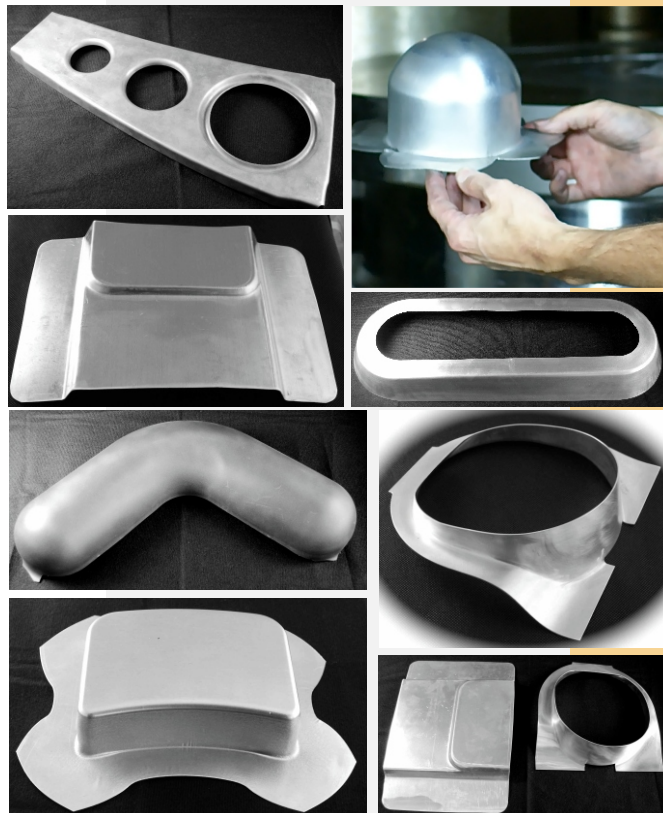
The hydroform press is fully programmable:

- Fluid Cell Process mode
- Deep Draw Process mode

The full featured control offer job storage and recipe handling with expansion capabilities. In addition to sequential programming of pressure and position, the operator interface data/program screens include:

- System Diagnostics
- Alarm Handling and Logging
- Multi-level password protection
- OEM set-up screen for remote system performance adjustments
- PLC Input / Output visualization
- Batch Counter
- Cycle Timer

Optional remote VPN connection via Ethernet allows for the press system to be monitored by the factory for immediate technical support.



2230 N. Sheridan | Tulsa, OK 74115, USA  
[www.pryertechgroup.com](http://www.pryertechgroup.com) | 855-864-4670